

# Panasonic

## BUSINESS

U series H.265 i-PRO Extreme Fixed Camera

**Built-in varifocal lens indoor models** (WV-U1132/U1142/U2132L/U2142L)

**Built-in varifocal lens outdoor models** (WV-U1532L/U1542L/U2532L/U2542L)

**Built-in fixed lens indoor models** (WV-U1130/U2130L/U2140L)

**Built-in fixed lens outdoor models** (WV-U2530L/U2540L)

Ver. 1.00

Panasonic i-PRO Sensing Solutions Co., Ltd.

**Build a high-performance security system while keeping initial investment low.**



**Providing TCO friendly solution  
with VI System**

# Concept & Main Features

New U series i-PRO Extreme cameras follows with the basic performance of the current i-PRO Extreme series and responds to the desire to install a basic surveillance system first.

## Extreme Visibility

High sensitivity with color night vision (Full HD models)   
View objects in dark condition with IR LED  
Super dynamic 120dB (Full HD models) / Corridor mode

## Extreme Compression

H.265 compression with new smart coding technology

## Extreme Analytics

VMD(Video Motion Detection)+Scene change detection

## Extreme Reliability

Vandal resistant / IP66 compliant

## Easy installation

Built in motorized varifocal lens  
Easy kitting



- ✓ High sensitivity with color night vision (Full HD models) 

It shows clear color images in low light condition at night time

Other leading brand camera



i-PRO Extreme camera WV-U2132L



Under 2-5 lux lighting environment

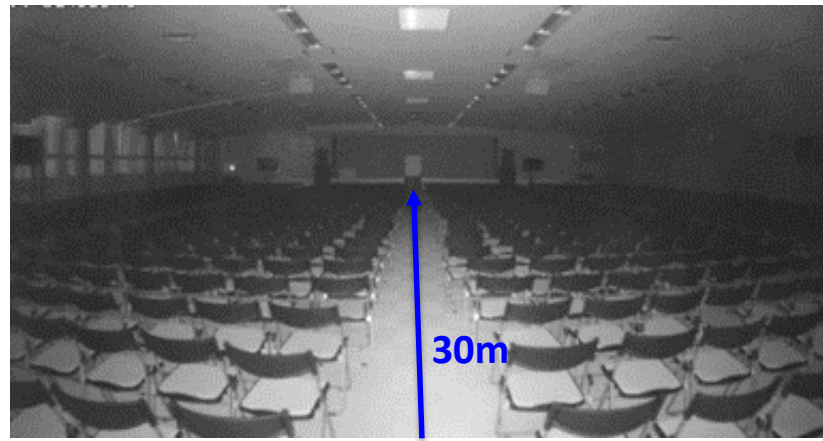
✓ View objects in dark conditions

Enables to visible the objects in even 0 lux condition by built in IR LED new i-PRO extreme camera

Other leading brand camera



i-PRO Extreme camera WV-U2132L

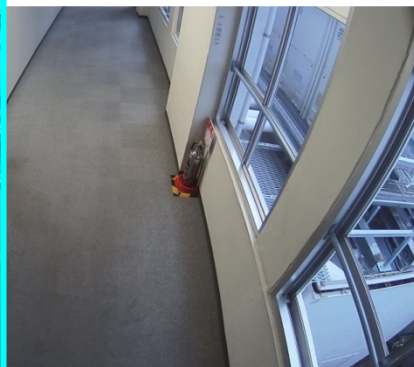
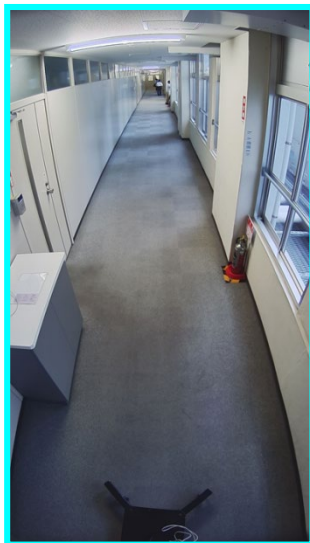


Under 0 lux lighting environment

✓ Corridor mode

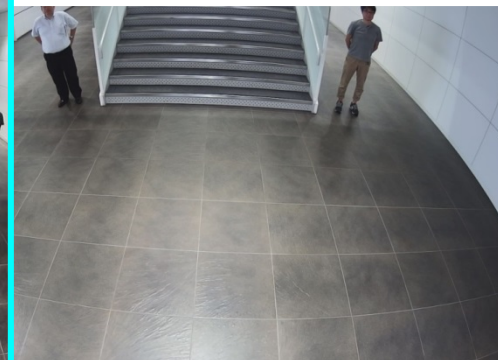
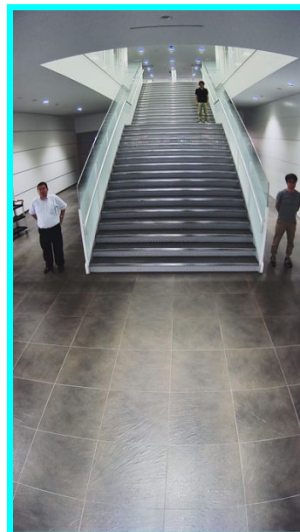
Monitoring can be made suitable for corridors, aisles, etc. by setting the image to be monitored at an aspect ratio of 9:16.

Corridor mode



In corridor

Corridor mode



Stairs in the lobby

# Extreme Compression

## ✓ H.265 compression with new smart coding technology

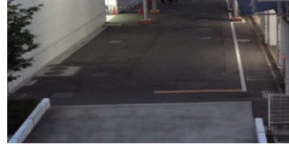
### GOP control

Reduces encoding data by using p-frame in place of i-frame when no motion is detected.

With motion



Without motion



### Auto-VIQS

Automatically determines areas with and without motion and reduce the data volume of those without motion



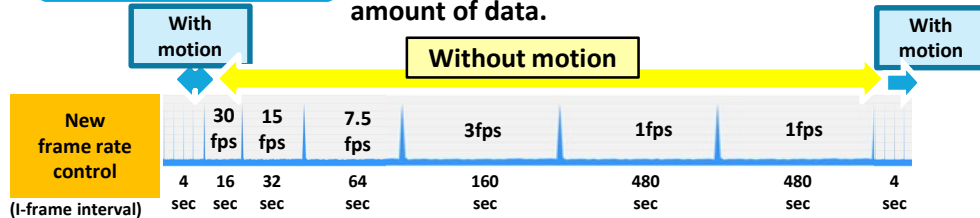
Low bit rate  
(Higher  
Compression)

High bit rate  
(Original compression)

\*Simulated image

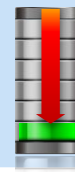
### Frame control

Dynamically reduce the i-frame rate to reduce the amount of data.



Bit rate  
reduction

Conventional  
H.264



i-PRO extreme  
H.265 + Smart coding  
**Max.95%**

Value in bit rate depends on scene



# Extreme Compression

## ✓ H.265 compression with new smart coding technology

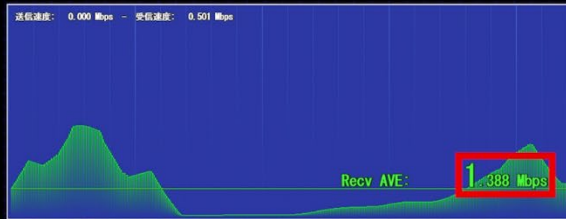
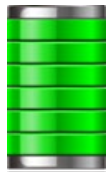
Daytime

Other leading brand camera  
with bit rate control

i-PRO Extreme camera WV-SU2132L  
with smart coding



H.264



Max.  
50%



## ✓ H.265 compression with new smart coding technology

Low light

Other leading brand camera  
with bit rate control

i-PRO Extreme camera WV-SU2132L  
with smart coding



H.264



Max.  
50%

## ✓ Achieve high endurance and long life usage under extreme conditions

■ Dustproof Test



■ High-Temperature Test



■ Pressure Test



■ Earthquake Test



■ Waterproof Test



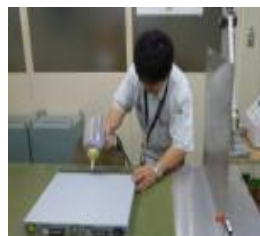
■ Lifetime Test



■ Thunder Test



■ Static Electricity Test



■ Drop Test



■ Box Shaking Test



## ✓ Achieve high endurance and long life usage under extreme conditions

### ■ **Vandal Resistant** \*Except indoor models

- ✓ Highly impact resistant.
- ✓ IEC 62262 IK10



### ■ **Anti-corrosion screw** \*Except indoor models

Adoption of Anti-corrosion screws prevents to corrosion and improves maintainability.

### ■ **Water & Dust Resistant** \*Except Indoor models

- ✓ IP66
- ✓ IEC60529 measuring standard compatible
- ✓ Type 4X(UL50E)
- ✓ NEMA 4X compliant

- ✓ **Built in motorized varifocal lens** (Built-in varifocal lens models only)

**Easy to adjust focus and zoom to reduce installation time & cost**

i-PRO Extreme camera WV-U2132L



**Push the TELE and WIDE buttons.**



**Network**







**Adjustment via PC**

## ✓ Easy kitting



- No need to remove the camera from the box before setting up.
- Reduces time and effort to install multiple cameras.

# Specifications – Built-in varifocal lens models


Box type		WV-U1132 	WV-U1532L 	WV-U1142 	WV-U1542L 
Image sensor /		1 / 3 type CMOS		1 / 2.7 type CMOS	
Compression		H.265 / JPEG			
Resolution		1920 x 1080 (Full HD)		2560 X 1440 (4M)	
Max. frame rate		30 fps(Stream 1) , 15 fps(Stream 2, Stream 3) *When stream 1 is set to 30 fps, streams 2 and 3 cannot be output			
Minimum Illumination *Shutter speed 1/30s	Color	0.1lx @F2.0, 0.006 lx @ shutter speed 16/30		0.3lx @F2.0, 0.019 lx @ shutter speed 16/30	
	B/W	0.04lx @F2.0, 0.0025 lx @ shutter speed 16/30	0 lx @ IR	0.12lx @F2.0, 0.0075 lx @ shutter speed 16/30	0 lx @ IR
Angular Field of View *16:9 mode	Horizontal	44° (Tele) – 102° (Wide)		44° (Tele) – 103° (Wide)	
	Vertical	24° (Tele) - 56° (Wide)		25° (Tele) - 57° (Wide)	
Intelligent Auto / WDR / Smart coding / Corridor mode		Yes / Super Dynamic (120dB) / Yes / Yes		Yes / Super Dynamic (102dB) / Yes / Yes	
Focus / Zoom		Motorized / 2.5 x Motorized(Digital 4x)			
IR LED		-	30m( 100ft)	-	20m( 65ft)
Audio / External I/O terminals		- / -			
SD memory card slot		1slot (microSD/SDXC/SDHC)			
Secure communication		- / -			
Environmental		-	IP66, Type 4X(UL50E), NEMA 4X compliant, IK10	-	IP66, Type 4X(UL50E), NEMA 4X compliant, IK10
Power Source		PoE			
Ambient Operating Temperature		-10° C to +50° C (-14° F to 122° F)	-30° C to +50° C (-22° F to 122° F)	-10° C to +50° C (-14° F to 122° F)	-30° C to +50° C (-22° F to 122° F)
Dimension (mm)		59 (W) x 49 (H) x 116 (D)	112.5 (W) x 112.5 (H) x 262 (D)	59 (W) x 49 (H) x 116 (D)	112.5 (W) x 112.5 (H) x 262 (D)







# Specifications – Built-in varifocal lens models

Dome type		WV-U2132L	WV-U2532L	WV-U2142L	WV-U2542L
Image sensor /		1 / 3 type CMOS		1 / 2.7 type CMOS	
Compression		H.265 / JPEG			
Resolution		1920 x 1080 (Full HD)		2560 X 1440 (4M)	
Max. frame rate		30 fps(Stream 1) , 15 fps(Stream 2, Stream 3) *When stream 1 is set to 30 fps, streams 2 and 3 cannot be output			
Minimum Illumination *Shutter speed 1/30s	Color	0.1lx @F2.0 , 0.006 lx @ shutter speed 16/30		0.3lx @F2.0 , 0.019 lx @ shutter speed 16/30	
	B/W	0 lx @ IR			
Angular Field of View *16:9 mode	Horizontal	43° (Tele) – 100° (Wide)		44° (Tele) – 102° (Wide)	
	Vertical	24° (Tele) - 56° (Wide)		25° (Tele) - 57° (Wide)	
Intelligent Auto / WDR / Smart coding / Corridor mode		Yes / Super Dynamic (120dB) / Yes / Yes		Yes / Super Dynamic (102dB) / Yes / Yes	
Focus / Zoom		Motorized / 2.5 x Motorized(Digital 4x)			
IR LED		30m( 100ft)		20m( 65ft)	
Audio / External I/O terminals		- / -			
SD memory card slot		1slot (microSDXC/SDHC)			
Secure communication		- / -			
Environmental		-	IP66, Type 4X(UL50E), NEMA 4X compliant, IK10	-	IP66, Type 4X(UL50E), NEMA 4X compliant, IK10
Power Source		PoE			
Ambient Operating Temperature		-10° C to +50° C (-14° F to 122° F)	-30° C to +50° C (-22° F to 122° F)	-10° C to +50° C (-14° F to 122° F)	-30° C to +50° C (-22° F to 122° F)
Dimension (mm)		Ø129.5 x 101 (H)	Ø154 x 103 (H)	Ø129.5 x 101 (H)	Ø154 x 103 (H)

# Specifications – Built-in fixed lens models

Box type		WV-U1130 
Image sensor /		1 / 3 type CMOS
Compression		H.265 / JPEG
Resolution		1920 x 1080 (Full HD)
Max. frame rate		30 fps(Stream 1) , 15 fps(Stream 2, Stream 3) *When stream 1 is set to 30 fps, streams 2 and 3 cannot be output
Minimum Illumination *Shutter speed 1/30s	Color	<b>0.1lx @F2.0 , 0.006 lx @ shutter speed 16/30</b>
	B/W	0.04lx @F2.0, 0.0025 lx @ shutter speed 16/30
Angular Field of View *16:9 mode	Horizontal	102°
	Vertical	55°
Intelligent Auto / WDR / Smart coding / Corridor mode		<b>Yes / Super Dynamic (120dB) / Yes / Yes</b>
Focus / Zoom		Fixed / -
IR LED		-
Audio / External I/O terminals		- / -
SD memory card slot		1slot (microSD/SDXC/SDHC)
Secure communication		- / -
Environmental		-
Power Source		PoE
Ambient Operating Temperature		-10° C to +50° C (-14° F to 122° F)
Dimension (mm)		59 (W) x 49 (H) x 116 (D)

# Specifications – Built-in fixed lens models

Dome type		WV-U2130L 	WV-U2530L 	WV-U2140L 	WV-U2540L 
Image sensor /		1 / 3 type CMOS		1 / 2.7 type CMOS	
Compression		H.265 / JPEG			
Resolution		1920 x 1080 (Full HD)		2560 X 1440 (4M)	
Max. frame rate		30 fps(Stream 1) , 15 fps(Stream 2, Stream 3) *When stream 1 is set to 30 fps, streams 2 and 3 cannot be output			
Minimum Illumination *Shutter speed 1/30s	Color	<b>0.1lx @F2.0, 0.006 lx @ shutter speed 16/30</b>		<b>0.3lx @F2.0, 0.019 lx @ shutter speed 16/30</b>	
	B/W	<b>0 lx @ IR</b>			
Angular Field of View *16:9 mode	Horizontal	100°			
	Vertical	54°			
Intelligent Auto / WDR / Smart coding / Corridor mode		<b>Yes / Super Dynamic (120dB) / Yes / Yes</b>		<b>Yes / Super Dynamic (102dB) / Yes / Yes</b>	
Focus / Zoom		Fixed / -			
IR LED		<b>30m( 100ft)</b>		<b>20m( 65ft)</b>	
Audio / External I/O terminals		- / -			
SD memory card slot		1slot (microSDXC/SDHC)			
Secure communication		- / -			
Environmental		-	IP66, Type 4X(UL50E), NEMA 4X compliant, IK10	-	IP66, Type 4X(UL50E), NEMA 4X compliant, IK10
Power Source		PoE			
Ambient Operating Temperature		-10° C to +50° C (-14° F to 122° F)	-30° C to +50° C (-22° F to 122° F)	-10° C to +50° C (-14° F to 122° F)	-30° C to +50° C (-22° F to 122° F)
Dimension (mm)		ø109 mm x 62 mm (H)			

# Optional Accessories

## ■ Optional dome covers and brackets (1)

### Embedded ceiling mount

WV-QEM500-W  
(White)



### Ceiling mount

WV-Q105A  
For indoor



### Dome Cover

WV-CW7S  
Smoke type



### Sun Shade

WV-QSR500-W  
(White)



### Base bracket For ceiling

WV-QJB500-W  
(White)



### Attachment for 3rd party pipe

WV-QCL100-W  
WV-QCL101-W  
(White)



### Wall mount

WV-QWL500-W  
(White)    WV-QJB500-W  
(White)



### Mount bracket

WV-QSR501-W  
(White)



### Wall mount

WV-QWL501-W  
(White)



### Ceiling mount

WV-QCL501-W  
(White)



### Attachment pipe For 3rd party pipe

WV-QAT500-W  
(White)



### Pole mount

WV-QPL500-W  
(White)

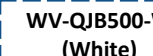
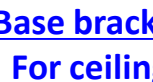
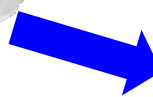


### Corner mount

WV-QCN500-W  
(White)



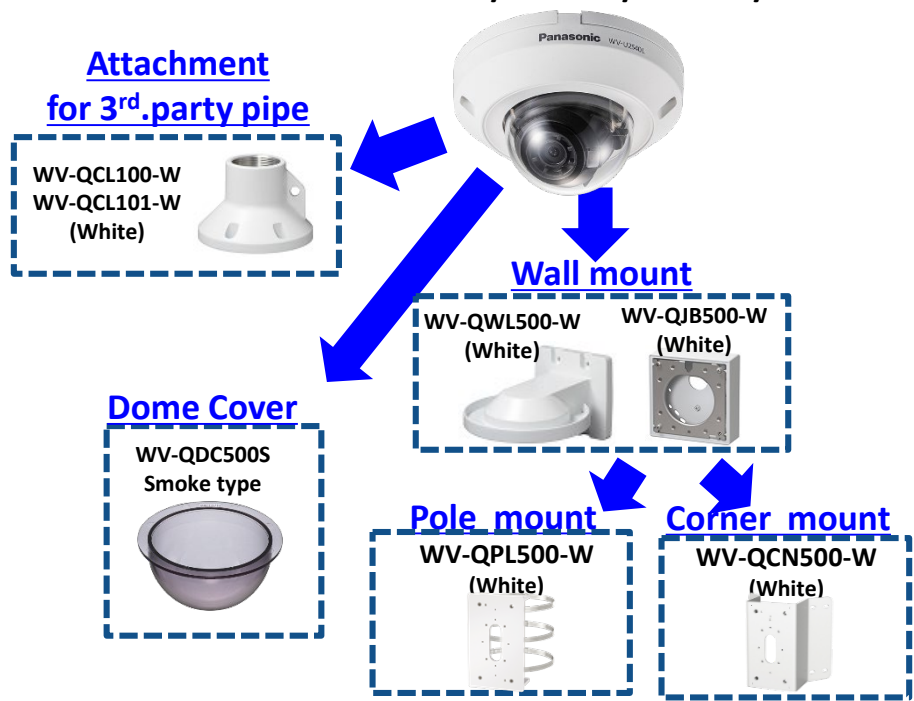
WV-U2532L  
U2542L



# Optional Accessories

## ■ Optional dome covers and brackets (2)

WV-U2130L/U2140L/U2530L/2540L



Attachment for 3<sup>rd</sup>.party pipe

WV-U2132L/U2142L

Embedded ceiling mount



Dome Cover

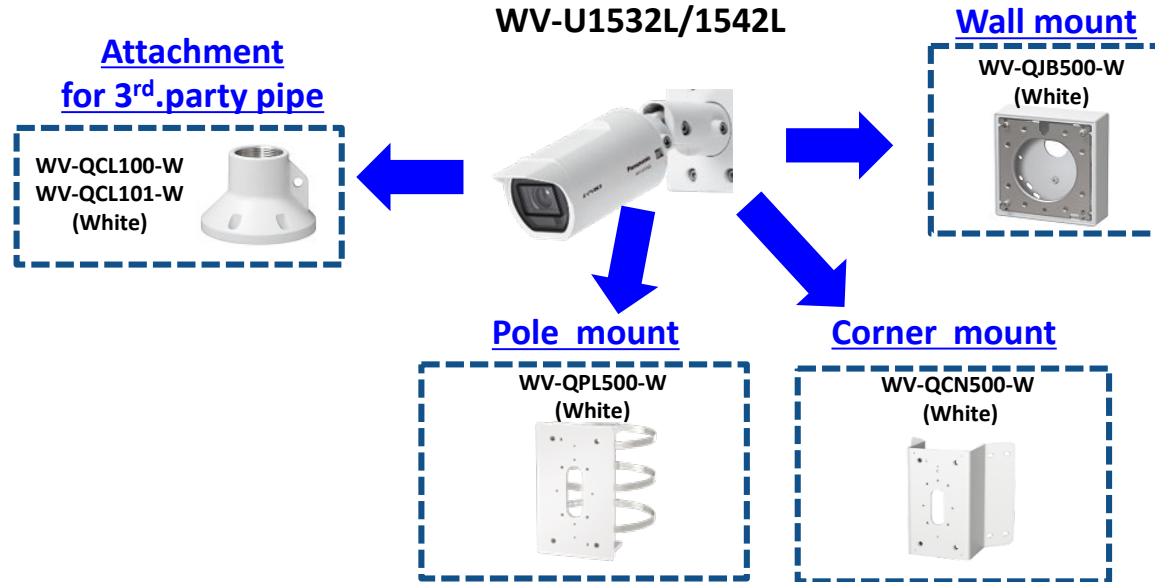


Ceiling mount



Wall mount

## ■ Optional dome covers and brackets (3)





Those cameras are suitable under the extreme conditions

- ✓ **Retails**
  - ✓ **Education**
  - ✓ **Bank / Logistics / Hospital / Building**
  - ✓ **Public safety**
- and more.



***i-PRO***  
***EXTREME***